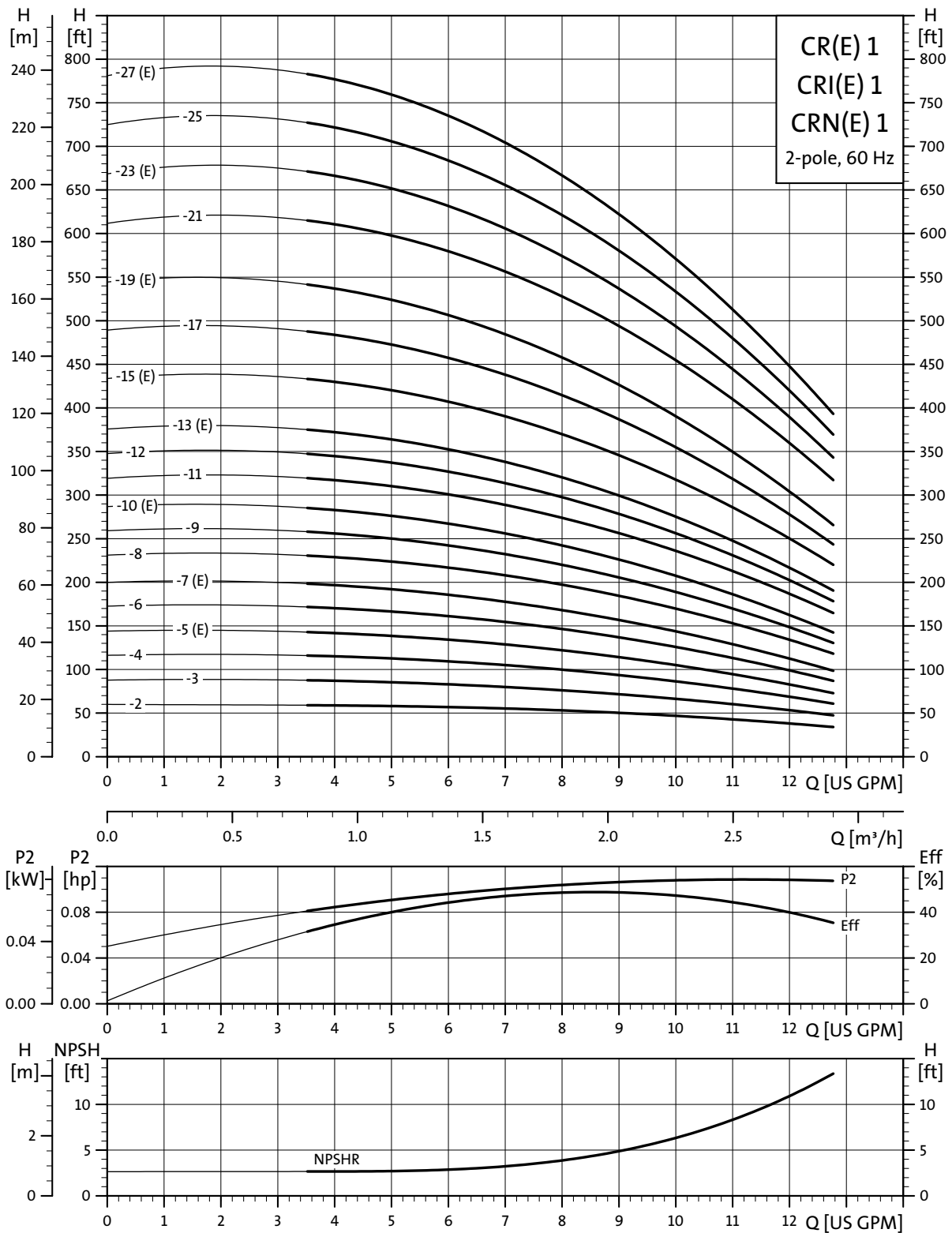


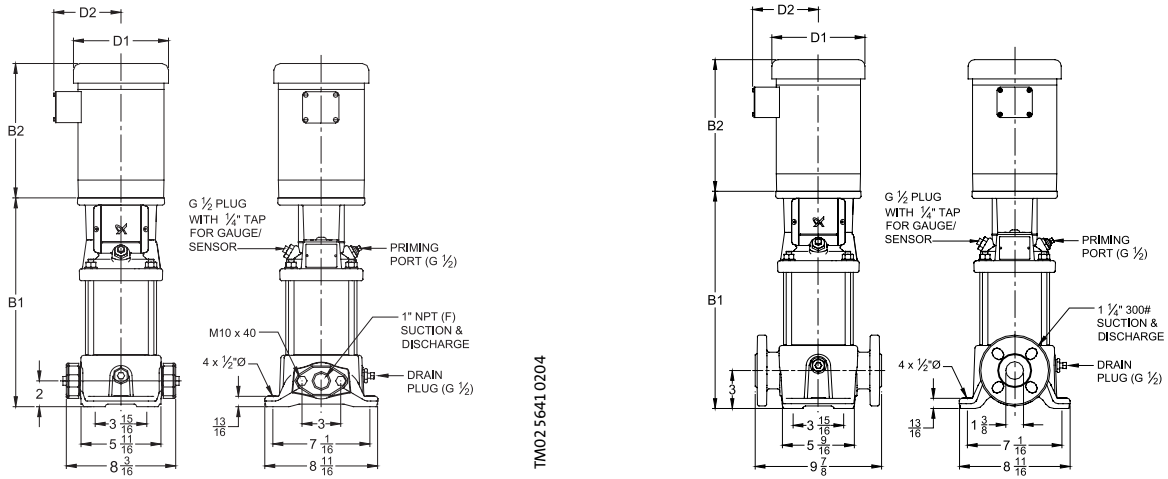
Performance curves

CR(E) 1, CRI(E) 1, CRN(E) 1



TM02 4083 1303

Dimensional sketches



Dimensions and weights

Pump type	Hp	Ph	Voltage	NEMA Frame size	Oval B1	ANSI B1	ODP		TEFC		Oval ODP B1+B2	Oval TEFC B1+B2	ANSI ODP B1+B2	ANSI TEFC B1+B2	Oval Ship Wt. ¹ [lbs.]	ANSI Ship Wt. ¹ [lbs.]	MLE		Oval MLE B1+B2	ANSI MLE B1+B2	Oval Ship Wt. ¹ [lbs.]	ANSI Ship Wt. ¹ [lbs.]
							D1	D2	D1	D2							D1	D2				
CR 1-2	1/3	1	115/230	56C	11	12	5 3/4	4 7/8	6 1/4	5	20 3/8	20 3/8	21 3/8	21 3/8	53	62	-	-	-	-	-	-
		3	208-230/460	56C	11	12	6 1/4	4 1/2	6 1/4	5	20 1/2	20 3/8	21 1/2	21 3/8	53	62	-	-	-	-	-	-
CR 1-3	1/3	1	115/230	56C	11	12	5 3/4	4 7/8	6 1/4	5	20 3/8	20 3/8	21 3/8	21 3/8	53	62	-	-	-	-	-	-
		3	208-230/460	56C	11	12	6 1/4	4 1/2	6 1/4	5	20 1/2	20 3/8	21 1/2	21 3/8	53	62	-	-	-	-	-	-
CR 1-4	1/2	1	115/208-230	56C	11 3/4	12 3/4	5 3/4	4 7/8	6 1/4	5	21 1/8	21 1/8	22 1/8	22 1/8	53	62	-	-	-	-	-	-
		3	208-230/460	56C	11 3/4	12 3/4	6 1/4	4 1/2	6 1/4	5	21	21 1/8	22	22 1/8	53	62	-	-	-	-	-	-
CR(E) 1-5	1/2	1	115/208-230	56C	12 1/2	13 1/2	5 3/4	4 7/8	6 1/4	5	21 7/8	21 7/8	22 7/8	22 7/8	53	62	5 1/2	5 1/2	20	21	55	64
		3	208-230/460	56C	12 1/2	13 1/2	6 1/4	4 1/2	6 1/4	5	21 3/4	21 7/8	22 3/4	22 7/8	53	62	-	-	-	-	-	-
CR 1-6	3/4	1	115/208-230	56C	13 1/8	14 1/8	6 1/4	4 7/8	6 1/4	5	24 1/8	23 1/8	25 1/8	24 1/8	56	65	-	-	-	-	-	-
		3	208-230/460	56C	13 1/8	14 1/8	6 1/4	4 1/2	6 1/4	5	22 5/8	22 1/2	23 5/8	23 1/2	56	65	-	-	-	-	-	-
CR(E) 1-7	3/4	1	115/208-230	56C	13 7/8	14 7/8	6 1/4	4 7/8	6 1/4	5	24 7/8	23 7/8	25 7/8	24 7/8	57	66	5 1/2	5 1/2	21 3/8	22 3/8	58	67
		3	208-230/460	56C	13 7/8	14 7/8	6 1/4	4 1/2	6 1/4	5	23 3/8	23 1/4	24 3/8	24 1/4	57	66	-	-	-	-	-	-
CR 1-8	1	1	115/208-230*	56C	14 5/8	15 5/8	7 1/4	5 5/8	7 1/4	5 3/4	25 7/8	25 7/8	26 7/8	26 7/8	61	70	-	-	-	-	-	-
		3	208-230/460	56C	14 5/8	15 5/8	7 1/4	5 5/8	7 1/4	5 3/4	24 1/8	24 7/8	25 1/8	25 7/8	61	70	-	-	-	-	-	-
CR 1-9	1	1	115/208-230*	56C	15 1/4	16 1/4	7 1/4	5 5/8	7 1/4	5 3/4	26 1/2	26 1/2	27 1/2	27 1/2	61	72	-	-	-	-	-	-
		3	208-230/460	56C	15 1/4	16 1/4	7 1/4	5 5/8	7 1/4	5 3/4	24 3/4	25 1/2	25 3/4	26 1/2	61	72	-	-	-	-	-	-
CR(E) 1-10	1	1	115/208-230*	56C	16	17	7 1/4	5 5/8	7 1/4	5 3/4	27 1/4	27 1/4	28 1/4	28 1/4	63	73	5 1/2	5 1/2	25 1/8	26 1/8	67	76
		3	208-230/460	56C	16	17	7 1/4	5 5/8	7 1/4	5 3/4	25 1/2	26 1/4	26 1/2	27 1/4	63	73	7	6 2/3	27 1/2	28 1/2	78	88
CR 1-11	1 1/2	1	115/208-230	56C	16 3/4	17 3/4	7 1/4	5 5/8	7 1/4	5 3/4	28 1/2	28 1/2	29 1/2	29 1/2	72	81	-	-	-	-	-	-
		3	208-230/460	56C	16 3/4	17 3/4	7 1/4	5 5/8	7 1/4	5 3/4	27 1/2	27 1/2	28 1/2	28 1/2	72	81	-	-	-	-	-	-
CR 1-12	1 1/2	1	115/208-230	56C	17 3/8	18 3/8	7 1/4	5 5/8	7 1/4	5 3/4	29 1/8	29 1/8	30 1/8	30 1/8	73	82	-	-	-	-	-	-
		3	208-230/460	56C	17 3/8	18 3/8	7 1/4	5 5/8	7 1/4	5 3/4	28 1/8	28 1/8	29 1/8	29 1/8	73	82	-	-	-	-	-	-
CR(E) 1-13	1 1/2	1	115/208-230	56C	18 1/8	19 1/8	7 1/4	5 5/8	7 1/4	5 3/4	29 7/8	29 7/8	30 7/8	30 7/8	74	83	5 1/2	5 1/2	27 1/8	28 1/8	73	82
		3	208-230/460	56C	18 1/8	19 1/8	7 1/4	5 5/8	7 1/4	5 3/4	28 7/8	28 7/8	29 7/8	29 7/8	74	83	7	6 5/8	29 5/8	30 5/8	86	95
CR(E) 1-15	2	1	115/208-230*	56C	19 1/2	20 1/2	7 1/4	5 5/8	7 1/4	5 3/4	31 1/4	32 1/8	32 1/4	33 1/8	79	88	-	-	-	-	-	-
		3	208-230/460	56C	19 1/2	20 1/2	7 1/4	5 5/8	7 1/4	5 3/4	30 1/4	31 1/4	31 1/4	32 1/4	79	88	7	6 5/8	30	31	100	109
CR 1-17	2	1	115/208-230*	56C	21	22	7 1/4	5 5/8	7 1/4	5 3/4	32 3/4	33 5/8	33 3/4	34 5/8	81	90	-	-	-	-	-	-
		3	208-230/460	56C	21	22	7 1/4	5 5/8	7 1/4	5 3/4	31 3/4	32 3/4	32 3/4	33 3/4	81	90	-	-	-	-	-	-
CR(E) 1-19	2	1	115/208-230*	56C	-	23 3/8	7 1/4	5 5/8	7 1/4	5 3/4	-	-	35 1/8	36	-	91	-	-	-	-	-	-
		3	208-230/460	56C	-	23 3/8	7 1/4	5 5/8	7 1/4	5 3/4	-	-	34 1/8	35 1/8	-	91	7 7/8	6 5/8	-	34 7/8	-	112
CR 1-21	3	1	115/208-230	182TC	-	25 7/8	8 1/2	6 3/4	8 5/8	6 7/8	-	-	40 3/8	40 3/8	-	109	-	-	-	-	-	-
		3	208-230/460	182TC	-	25 7/8	7 1/4	5 5/8	8 5/8	6 7/8	-	-	37 1/4	38 3/8	-	109	-	-	-	-	-	-
CR(E) 1-23	3	1	115/208-230	182TC	-	27 1/4	8 1/2	6 3/4	8 5/8	6 7/8	-	-	41 3/4	41 3/4	-	112	-	-	-	-	-	-
		3	208-230/460	182TC	-	27 1/4	7 1/4	5 5/8	8 5/8	6 7/8	-	-	38 5/8	39 3/4	-	112	7 7/8	6 5/8	-	40 5/8	-	127
CR 1-25	3	1	115/208-230	182TC	-	28 5/8	8 1/2	6 3/4	8 5/8	6 7/8	-	-	43 1/8	43 1/8	-	115	-	-	-	-	-	-
		3	208-230/460	182TC	-	28 5/8	7 1/4	5 5/8	8 5/8	6 7/8	-	-	40	41 1/8	-	115	-	-	-	-	-	-
CR(E) 1-27	3	1	115/208-230	182TC	-	30 1/8	8 1/2	6 3/4	8 5/8	6 7/8	-	-	44 5/8	44 5/8	-	116	-	-	-	-	-	-
		3	208-230/460	182TC	-	30 1/8	7 1/4	5 5/8	8 5/8	6 7/8	-	-	41 1/2	42 5/8	-	116	7 7/8	6 5/8	-	43 1/2	-	131

* TEFC voltage is 115/230

¹ Weights based on pump with ODP motor (see price list for individual weights)

All dimensions in inches unless otherwise noted.