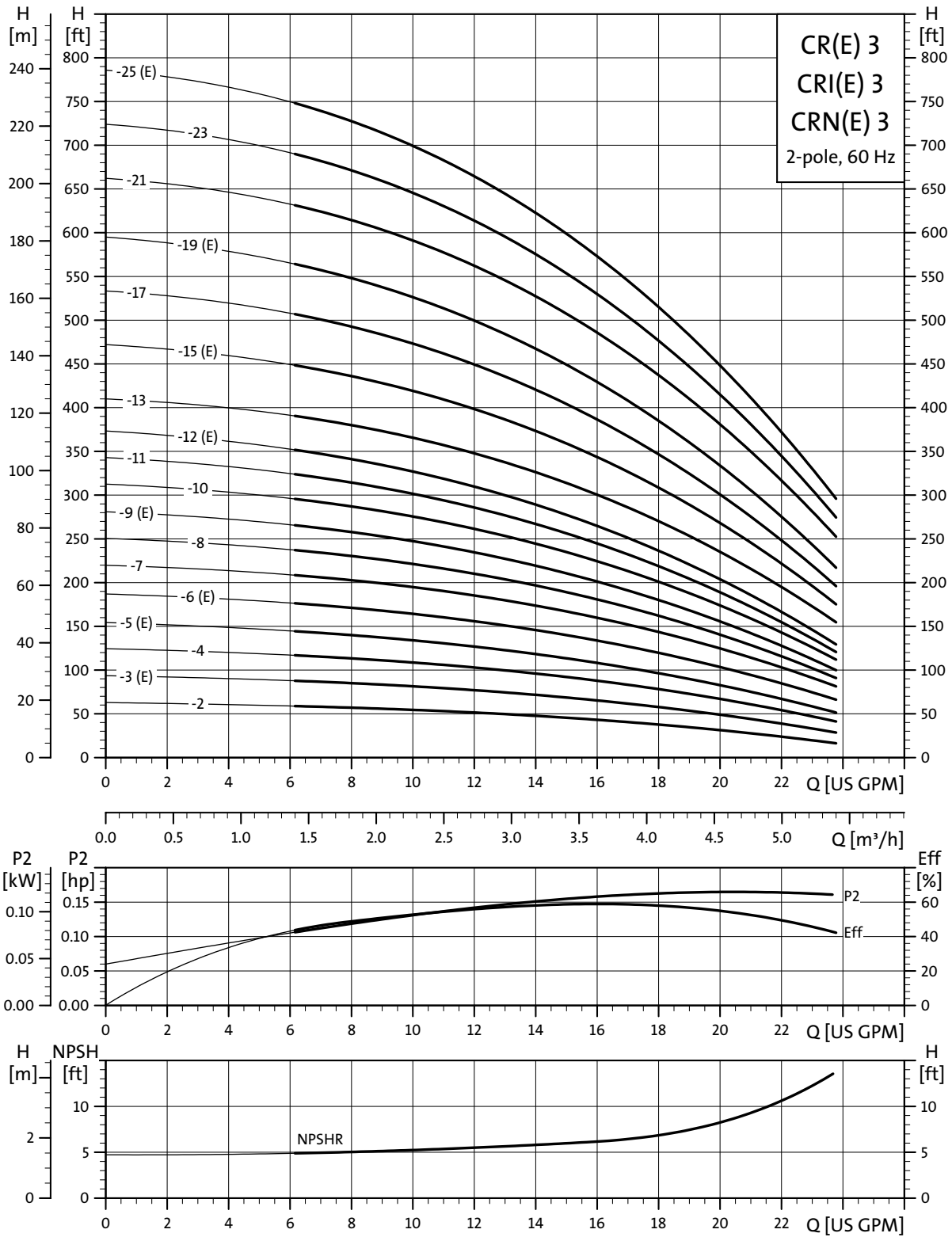


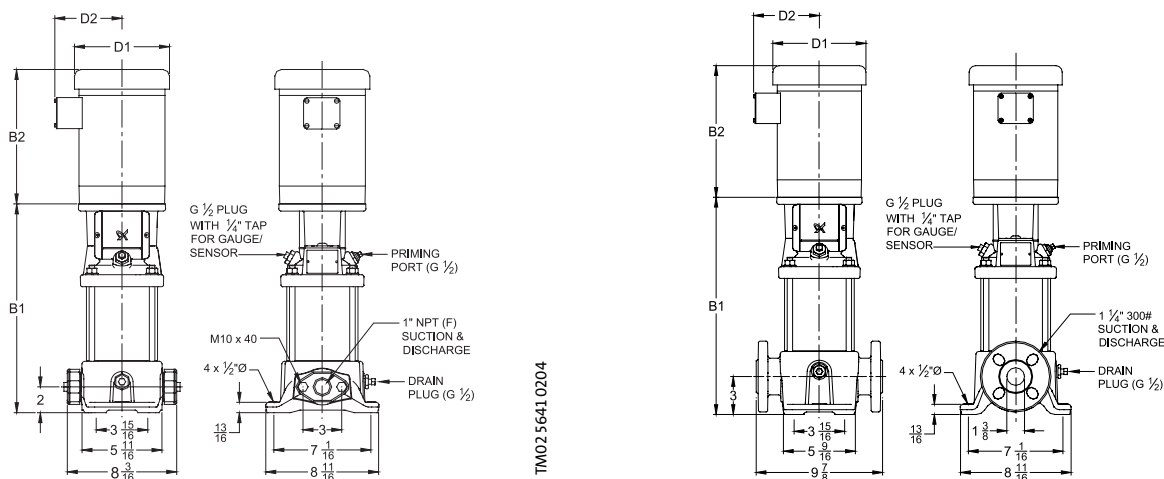
Performance curves

CR(E) 3, CRI(E) 3, CRN(E) 3



TM02 4084 1303

Dimensional sketches



Dimensions and weights

| Pump type | Hp | Ph | Voltage | NEMA Frame size | Oval B1 | ANSI B1 | ODP | | TEFC | | Oval ODP B1+B2 | Oval TEFC B1+B2 | ANSI ODP B1+B2 | ANSI TEFC B1+B2 | Oval Ship Wt. ¹ [lbs.] | ANSI Ship Wt. ¹ [lbs.] | MLE | | Oval MLE B1+B2 | ANSI MLE B1+B2 | Oval Ship Wt. ¹ [lbs.] | ANSI Ship Wt. ¹ [lbs.] |
|------------|-------|----|--------------|-----------------|---------|---------|--------|-------|--------|-------|----------------|-----------------|----------------|-----------------|-----------------------------------|-----------------------------------|-------|-------|----------------|----------------|-----------------------------------|-----------------------------------|
| | | | | | | | D1 | D2 | D1 | D2 | | | | | | | D1 | D2 | | | | |
| CR 3-2 | 1/3 | 1 | 115/230 | 56C | 11 | 12 | 5 3/4 | 4 7/8 | 6 1/4 | 5 | 20 3/8 | 20 3/8 | 21 3/8 | 21 3/8 | 53 | 62 | - | - | - | - | - | - |
| | | 3 | 208-230/460 | 56C | 11 | 12 | 6 1/4 | 4 1/2 | 6 1/4 | 5 | 20 1/2 | 20 3/8 | 21 1/2 | 21 3/8 | 53 | 62 | - | - | - | - | - | - |
| CR(E) 3-3 | 1/2 | 1 | 115/230 | 56C | 11 | 12 | 5 3/4 | 4 7/8 | 6 1/4 | 5 | 20 3/8 | 20 3/8 | 21 3/8 | 21 3/8 | 52 | 61 | 5 1/2 | 5 1/2 | 18 1/2 | 19 1/2 | 54 | 63 |
| | | 3 | 208-230/460 | 56C | 11 | 12 | 6 1/4 | 4 1/2 | 6 1/4 | 5 | 20 1/4 | 20 3/8 | 21 1/4 | 21 3/8 | 52 | 61 | - | - | - | - | - | - |
| CR 3-4 | 3/4 | 1 | 115/208-230 | 56C | 11 3/4 | 12 3/4 | 6 1/4 | 4 7/8 | 6 1/4 | 5 | 22 3/4 | 21 3/4 | 23 3/4 | 22 3/4 | 55 | 64 | - | - | - | - | - | - |
| | | 3 | 208-230/460 | 56C | 11 3/4 | 12 3/4 | 6 1/4 | 4 1/2 | 6 1/4 | 5 | 21 1/4 | 21 1/8 | 22 1/4 | 22 1/8 | 55 | 64 | - | - | - | - | - | - |
| CR(E) 3-5 | 3/4 | 1 | 115/208-230 | 56C | 12 1/2 | 13 1/2 | 6 1/4 | 4 7/8 | 6 1/4 | 5 | 23 1/2 | 22 1/2 | 24 1/2 | 23 1/2 | 55 | 64 | 5 1/2 | 5 1/2 | 20 | 21 | 57 | 66 |
| | | 3 | 208-230/460 | 56C | 12 1/2 | 13 1/2 | 6 1/4 | 4 1/2 | 6 1/4 | 5 | 22 | 21 7/8 | 23 | 22 7/8 | 55 | 64 | - | - | - | - | - | - |
| CR(E) 3-6 | 1 | 1 | 115/208-230* | 56C | 13 1/8 | 14 1/8 | 7 1/4 | 5 5/8 | 7 1/4 | 5 3/4 | 24 3/8 | 24 3/8 | 25 3/8 | 25 3/8 | 57 | 66 | 5 1/2 | 5 1/2 | 22 1/4 | 23 1/4 | 60 | 69 |
| | | 3 | 208-230/460 | 56C | 13 1/8 | 14 1/8 | 7 1/4 | 5 5/8 | 7 1/4 | 5 3/4 | 22 5/8 | 23 3/8 | 23 5/8 | 24 3/8 | 57 | 66 | 7 | 6 5/8 | 24 5/8 | 25 5/8 | 73 | 82 |
| CR 3-7 | 1 1/2 | 1 | 115/208-230 | 56C | 13 7/8 | 14 7/8 | 7 1/4 | 5 5/8 | 7 1/4 | 5 3/4 | 25 5/8 | 25 5/8 | 26 5/8 | 26 5/8 | 65 | 75 | - | - | - | - | - | - |
| | | 3 | 208-230/460 | 56C | 13 7/8 | 14 7/8 | 7 1/4 | 5 5/8 | 7 1/4 | 5 3/4 | 24 5/8 | 24 5/8 | 25 5/8 | 25 5/8 | 65 | 75 | - | - | - | - | - | - |
| CR 3-8 | 1 1/2 | 1 | 115/208-230 | 56C | 14 5/8 | 15 5/8 | 7 1/4 | 5 5/8 | 7 1/4 | 5 3/4 | 26 3/8 | 26 3/8 | 27 3/8 | 27 3/8 | 67 | 77 | - | - | - | - | - | - |
| | | 3 | 208-230/460 | 56C | 14 5/8 | 15 5/8 | 7 1/4 | 5 5/8 | 7 1/4 | 5 3/4 | 25 3/8 | 25 3/8 | 26 3/8 | 26 3/8 | 67 | 77 | - | - | - | - | - | - |
| CR(E) 3-9 | 1 1/2 | 1 | 115/208-230 | 56C | 15 1/4 | 16 1/4 | 7 1/4 | 5 5/8 | 7 1/4 | 5 3/4 | 27 | 27 | 28 | 28 | 68 | 79 | 5 1/2 | 5 1/2 | 24 3/8 | 25 3/8 | 69 | 78 |
| | | 3 | 208-230/460 | 56C | 15 1/4 | 16 1/4 | 7 1/4 | 5 5/8 | 7 1/4 | 5 3/4 | 26 | 26 | 27 | 27 | 68 | 79 | 7 | 6 5/8 | 26 3/4 | 27 3/4 | 81 | 91 |
| CR 3-10 | 2 | 1 | 115/208-230* | 56C | 16 | 17 | 7 1/4 | 5 5/8 | 7 1/4 | 5 3/4 | 27 3/4 | 28 5/8 | 28 3/4 | 29 5/8 | 74 | 85 | - | - | - | - | - | - |
| | | 3 | 208-230/460 | 56C | 16 | 17 | 7 1/4 | 5 5/8 | 7 1/4 | 5 3/4 | 26 3/4 | 27 3/4 | 27 3/4 | 28 3/4 | 74 | 85 | - | - | - | - | - | - |
| CR 3-11 | 2 | 1 | 115/208-230* | 56C | 16 3/4 | 17 3/4 | 7 1/4 | 5 5/8 | 7 1/4 | 5 3/4 | 28 1/2 | 29 3/8 | 29 1/2 | 30 3/8 | 77 | 86 | - | - | - | - | - | - |
| | | 3 | 208-230/460 | 56C | 16 3/4 | 17 3/4 | 7 1/4 | 5 5/8 | 7 1/4 | 5 3/4 | 27 1/2 | 28 1/2 | 28 1/2 | 29 1/2 | 77 | 86 | - | - | - | - | - | - |
| CR(E) 3-12 | 2 | 1 | 115/208-230* | 56C | 17 3/8 | 18 3/8 | 7 1/4 | 5 5/8 | 7 1/4 | 5 3/4 | 29 1/8 | 30 | 30 1/8 | 31 | 78 | 87 | - | - | - | - | - | - |
| | | 3 | 208-230/460 | 56C | 17 3/8 | 18 3/8 | 7 1/4 | 5 5/8 | 7 1/4 | 5 3/4 | 28 1/8 | 29 1/8 | 29 1/8 | 30 1/8 | 78 | 87 | 7 | 6 5/8 | 28 7/8 | 29 7/8 | 98 | 107 |
| CR 3-13 | 3 | 1 | 115/208-230 | 182TC | 19 1/4 | 20 1/8 | 8 1/2 | 6 3/4 | 8 5/8 | 6 7/8 | 33 3/4 | 33 3/4 | 34 5/8 | 34 5/8 | 95 | 104 | - | - | - | - | - | - |
| | | 3 | 208-230/460 | 182TC | 19 1/4 | 20 1/8 | 7 1/4 | 5 5/8 | 8 5/8 | 6 7/8 | 30 5/8 | 31 3/4 | 31 1/2 | 32 5/8 | 95 | 104 | - | - | - | - | - | - |
| CR(E) 3-15 | 3 | 1 | 115/208-230 | 182TC | 20 5/8 | 21 5/8 | 8 1/2 | 6 3/4 | 8 5/8 | 6 7/8 | 35 1/8 | 35 1/8 | 36 1/8 | 36 1/8 | 96 | 105 | - | - | - | - | - | - |
| | | 3 | 208-230/460 | 182TC | 20 5/8 | 21 5/8 | 7 1/4 | 5 5/8 | 8 5/8 | 6 7/8 | 32 | 33 1/8 | 33 | 34 1/8 | 96 | 105 | 7 | 6 5/8 | 34 | 35 | 111 | 120 |
| CR 3-17 | 3 | 1 | 115/208-230 | 182TC | 22 | 23 | 8 1/2 | 6 3/4 | 8 5/8 | 6 7/8 | 36 1/2 | 36 1/2 | 37 1/2 | 37 1/2 | 97 | 106 | - | - | - | - | - | - |
| | | 3 | 208-230/460 | 182TC | 22 | 23 | 7 1/4 | 5 5/8 | 8 5/8 | 6 7/8 | 33 3/8 | 34 1/2 | 34 3/8 | 35 1/2 | 97 | 106 | - | - | - | - | - | - |
| CR(E) 3-19 | 3 | 1 | 115/208-230 | 182TC | - | 24 3/8 | 8 1/2 | 6 3/4 | 8 5/8 | 6 7/8 | - | 38 7/8 | 38 7/8 | - | 107 | - | - | - | - | - | - | - |
| | | 3 | 208-230/460 | 182TC | - | 24 3/8 | 7 1/4 | 5 5/8 | 8 5/8 | 6 7/8 | - | 35 3/4 | 36 7/8 | - | 107 | 7 | 6 5/8 | - | 37 3/4 | - | - | 123 |
| CR 3-21 | 5 | 1 | 208-230 | 182TC | - | 25 7/8 | 10 5/8 | 7 3/8 | 10 5/8 | 7 1/2 | - | 41 1/4 | 41 1/4 | - | 116 | - | - | - | - | - | - | - |
| | | 3 | 208-230/460 | 182TC | - | 25 7/8 | 7 1/4 | 5 5/8 | 8 1/2 | 6 | - | 40 | 41 7/8 | - | 116 | - | - | - | - | - | - | - |
| CR 3-23 | 5 | 1 | 208-230 | 182TC | - | 27 1/4 | 10 5/8 | 7 3/8 | 10 5/8 | 7 1/2 | - | 42 5/8 | 42 5/8 | - | 118 | - | - | - | - | - | - | - |
| | | 3 | 208-230/460 | 182TC | - | 27 1/4 | 7 1/4 | 5 5/8 | 8 1/2 | 6 | - | 41 3/8 | 43 1/4 | - | 118 | - | - | - | - | - | - | - |
| CR(E) 3-25 | 5 | 1 | 208-230 | 182TC | - | 28 5/8 | 10 5/8 | 7 3/8 | 10 5/8 | 7 1/2 | - | 44 | 44 | - | 121 | - | - | - | - | - | - | - |
| | | 3 | 208-230/460 | 182TC | - | 28 5/8 | 7 1/4 | 5 5/8 | 8 1/2 | 6 | - | 42 3/4 | 44 5/8 | - | 121 | 8 2/3 | 7 1/2 | - | 44 1/8 | - | - | 162 |

* TEFC voltage is 115/230

¹ Weights based on pump with ODP motor (see price list for individual weights)

All dimensions in inches unless otherwise noted.