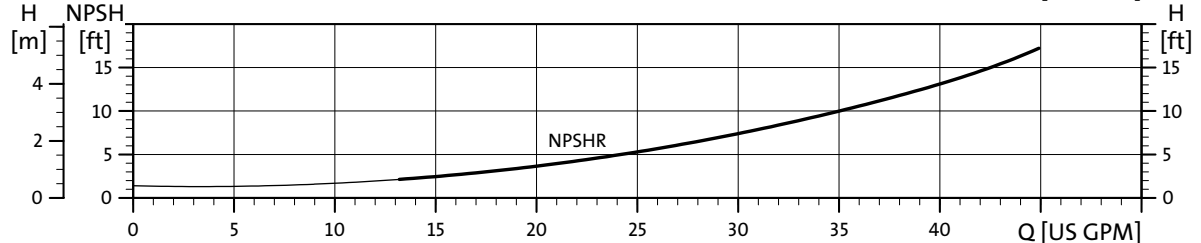
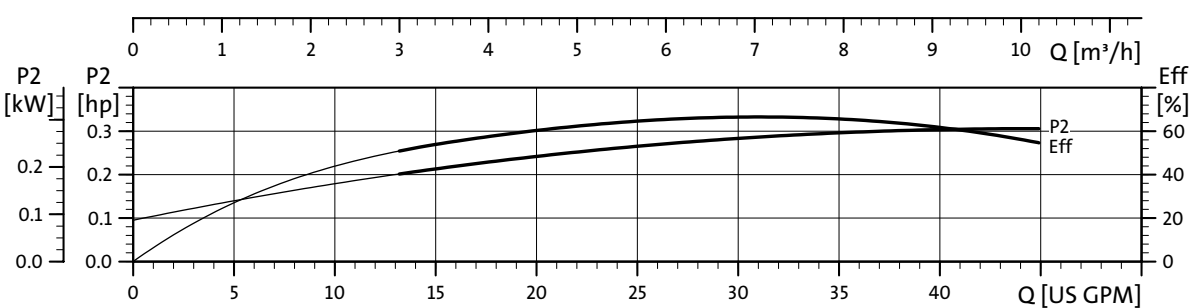
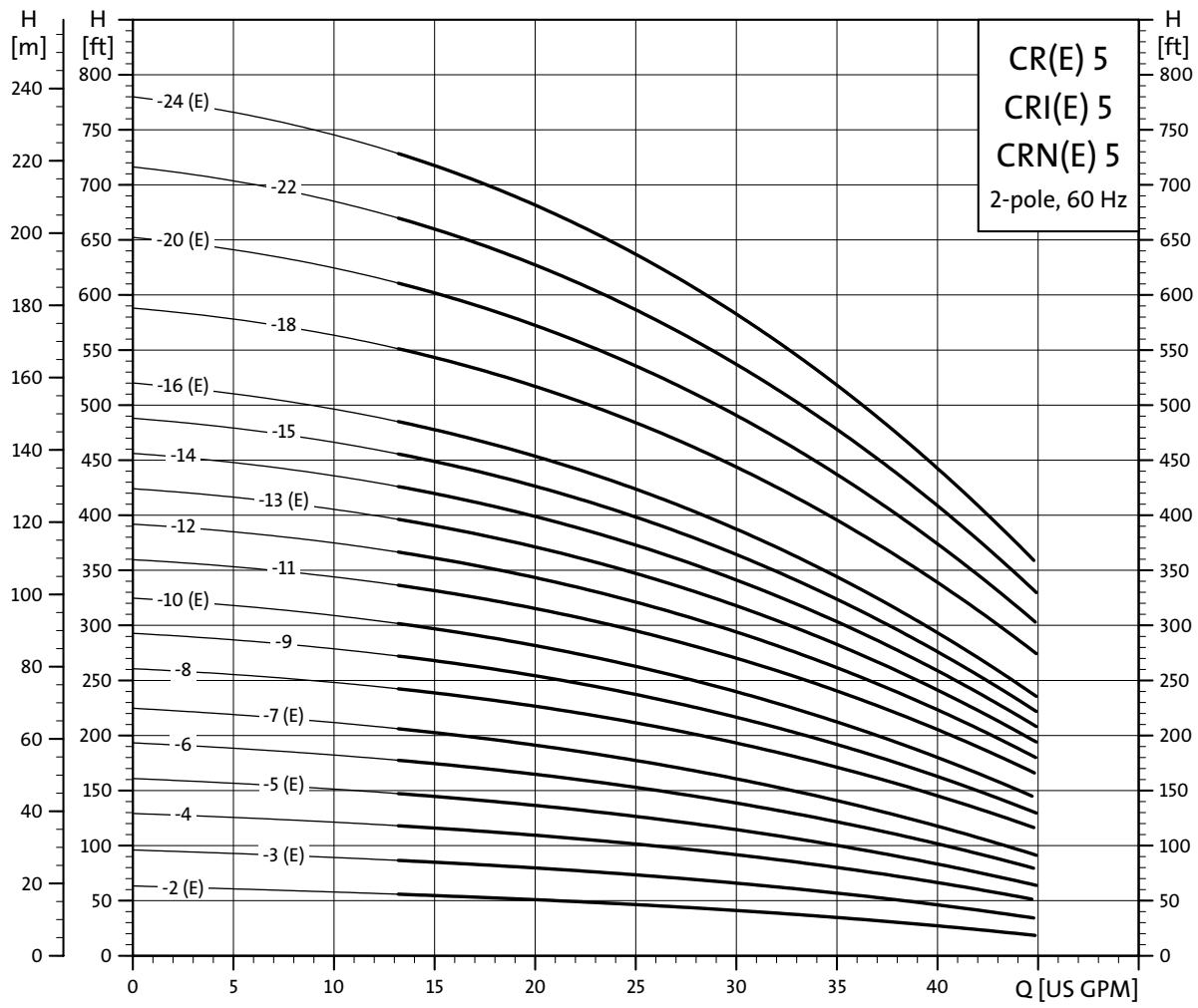


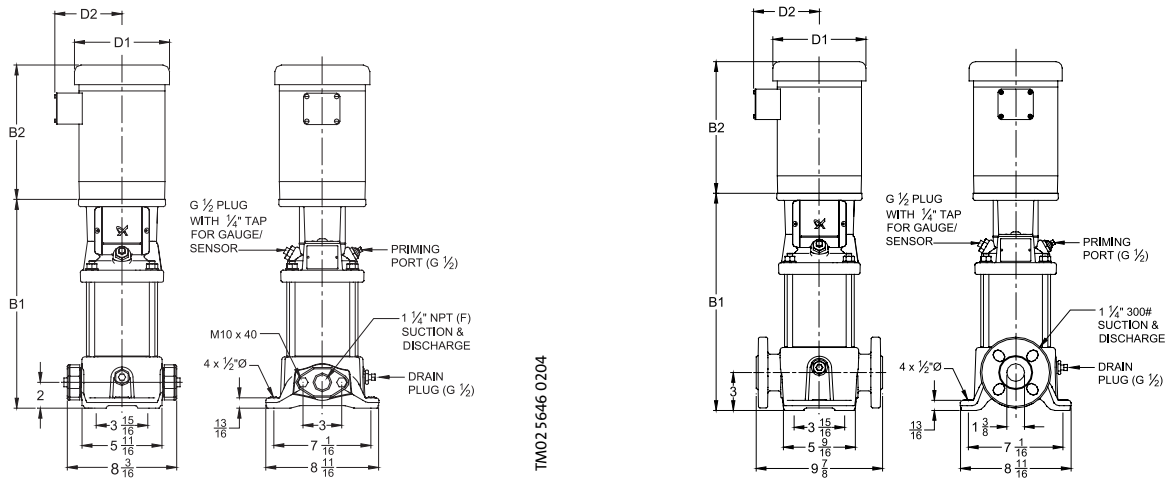
# Performance curves

CR(E) 5, CRI(E) 5, CRN(E) 5



TM02 4085 1303

## Dimensional sketches



## Dimensions and weights

Pump type	Hp	Ph	Voltage	NEMA Frame size	Oval B1	ANSI B1	ODP		TEFC		Oval ODP B1+B2	Oval TEFC B1+B2	ANSI ODP B1+B2	ANSI TEFC B1+B2	Oval Ship Wt. <sup>1</sup> [lbs.]	ANSI Ship Wt. <sup>1</sup> [lbs.]	MLE		Oval MLE B1+B2	ANSI MLE B1+B2	Oval Ship Wt. <sup>1</sup> [lbs.]	ANSI Ship Wt. <sup>1</sup> [lbs.]
							D1	D2	D1	D2							D1	D2				
CR(E) 5-2	3/4	1	115/208-230	56C	11	12	6 1/4	4 7/8	6 1/4	5	22	21	23	22	54	63	5 1/2	5 1/2	18 1/2	19 1/2	55	64
		3	208-230/460	56C	11	12	6 1/4	4 1/2	6 1/4	5	20 1/2	20 3/8	21 1/2	21 3/8	54	63	-	-	-	-	-	-
CR(E) 5-3	1	1	115/208-230*	56C	12 1/8	13 1/8	7 1/4	5 5/8	7 1/4	5 3/4	23 3/8	23 3/8	24 3/8	24 3/8	57	66	5 1/2	5 1/2	21 1/4	22 1/4	59	68
		3	208-230/460	56C	12 1/8	13 1/8	7 1/4	5 5/8	7 1/4	5 3/4	21 5/8	22 3/8	22 5/8	23 3/8	57	66	7	6 5/8	23 5/8	24 5/8	72	81
CR 5-4	1 1/2	1	115/208-230	56C	13 1/8	14 1/8	7 1/4	5 5/8	7 1/4	5 3/4	24 7/8	24 7/8	25 7/8	25 7/8	64	73	-	-	-	-	-	-
		3	208-230/460	56C	13 1/8	14 1/8	7 1/4	5 5/8	7 1/4	5 3/4	23 7/8	23 7/8	24 7/8	24 7/8	64	73	-	-	-	-	-	-
CR(E) 5-5	1 1/2	1	115/208-230	56C	14 1/4	15 1/4	7 1/4	5 5/8	7 1/4	5 3/4	26	26	27	27	66	76	5 1/2	5 1/2	23 3/8	24 3/8	66	77
		3	208-230/460	56C	14 1/4	15 1/4	7 1/4	5 5/8	7 1/4	5 3/4	25	25	26	26	66	76	7	6 5/8	25 3/4	26 3/4	78	88
CR 5-6	2	1	115/208-230*	56C	15 1/4	16 1/4	7 1/4	5 5/8	7 1/4	5 3/4	27	27 7/8	28	28 7/8	73	83	-	-	-	-	-	-
		3	208-230/460	56C	15 1/4	16 1/4	7 1/4	5 5/8	7 1/4	5 3/4	26	27	27	28	73	83	-	-	-	-	-	-
CR(E) 5-7	2	1	115/208-230*	56C	16 3/8	17 3/8	7 1/4	5 5/8	7 1/4	5 3/4	28 1/8	29	29 1/8	30	76	85	-	-	-	-	-	-
		3	208-230/460	56C	16 3/8	17 3/8	7 1/4	5 5/8	7 1/4	5 3/4	27 1/8	28 1/8	28 1/8	29 1/8	76	85	7 7/8	6 5/8	27 7/8	28 7/8	97	106
CR 5-8	3	1	115/208-230	182TC	18 1/2	19 1/2	8 1/2	6 3/4	8 5/8	6 7/8	33	33	34	34	94	103	-	-	-	-	-	-
		3	208-230/460	182TC	18 1/2	19 1/2	7 1/4	5 5/8	8 5/8	6 7/8	29 7/8	31	30 7/8	32	94	103	-	-	-	-	-	-
CR 5-9	3	1	115/208-230	182TC	19 1/2	20 1/2	8 1/2	6 3/4	8 5/8	6 7/8	34	34	35	35	95	104	-	-	-	-	-	-
		3	208-230/460	182TC	19 1/2	20 1/2	7 1/4	5 5/8	8 5/8	6 7/8	30 7/8	32	31 7/8	33	95	104	-	-	-	-	-	-
CR(E) 5-10	3	1	115/208-230	182TC	20 5/8	21 5/8	8 1/2	6 3/4	8 5/8	6 7/8	35 1/8	35 1/8	36 1/8	36 1/8	96	105	-	-	-	-	-	-
		3	208-230/460	182TC	20 5/8	21 5/8	7 1/4	5 5/8	8 5/8	6 7/8	32	33 1/8	33	34 1/8	96	105	7 7/8	6 5/8	34	35	111	120
CR 5-11	5	1	208-230	182TC	21 5/8	22 5/8	10 5/8	7 3/8	10 5/8	7 1/2	37	37	38	38	103	112	-	-	-	-	-	-
		3	208-230/460	182TC	21 5/8	22 5/8	7 1/4	5 5/8	8 1/2	6	35 3/4	37 5/8	36 3/4	38 5/8	103	112	-	-	-	-	-	-
CR 5-12	5	1	208-230	182TC	22 3/4	23 3/4	10 5/8	7 3/8	10 5/8	7 1/2	38 1/8	38 1/8	39 1/8	39 1/8	104	113	-	-	-	-	-	-
		3	208-230/460	182TC	22 3/4	23 3/4	7 1/4	5 5/8	8 1/2	6	36 7/8	38 3/4	37 7/8	39 3/4	104	113	-	-	-	-	-	-
CR(E) 5-13	5	1	208-230	182TC	23 3/4	24 3/4	10 5/8	7 3/8	10 5/8	7 1/2	39 1/8	39 1/8	40 1/8	40 1/8	105	115	-	-	-	-	-	-
		3	208-230/460	182TC	23 3/4	24 3/4	7 1/4	5 5/8	8 1/2	6	37 7/8	39 3/4	38 7/8	40 3/4	105	115	8 3/4	7 1/2	39 1/4	40 1/4	146	156
CR 5-14	5	1	208-230	182TC	24 7/8	25 7/8	10 5/8	7 3/8	10 5/8	7 1/2	40 1/4	40 1/4	41 1/4	41 1/4	107	116	-	-	-	-	-	-
		3	208-230/460	182TC	24 7/8	25 7/8	7 1/4	5 5/8	8 1/2	6	39	40 7/8	40	41 7/8	107	116	-	-	-	-	-	-
CR 5-15	5	1	208-230	182TC	25 7/8	26 7/8	10 5/8	7 3/8	10 5/8	7 1/2	41 1/4	41 1/4	42 1/4	42 1/4	109	118	-	-	-	-	-	-
		3	208-230/460	182TC	25 7/8	26 7/8	7 1/4	5 5/8	8 1/2	6	40	41 7/8	41	42 7/8	109	118	-	-	-	-	-	-
CR(E) 5-16	5	1	208-230	182TC	27	28	10 5/8	7 3/8	10 5/8	7 1/2	42 3/8	42 3/8	43 3/8	43 3/8	110	119	-	-	-	-	-	-
		3	208-230/460	182TC	27	28	7 1/4	5 5/8	8 1/2	6	41 1/8	43	42 1/8	44	110	119	8 3/4	7 1/2	42 1/2	43 1/2	151	160
CR 5-18	7 1/2	1	208-230	213TC	-	30 1/2	10 3/8	8 1/8	10 1/4	7 1/2	-	-	45 7/8	45 7/8	-	152	-	-	-	-	-	-
		3	208-230/460	213TC	-	30 1/2	10 3/8	8 1/8	10 1/4	8 1/8	-	-	45 7/8	45 7/8	-	152	-	-	-	-	-	-
CR(E) 5-20	7 1/2	1	208-230	213TC	-	32 5/8	10 3/8	8 1/8	10 1/4	7 1/2	-	-	48	48	-	154	-	-	-	-	-	-
		3	208-230/460	213TC	-	32 5/8	10 3/8	8 1/8	10 1/4	8 1/8	-	-	48	48	-	154	8 3/4	7 1/2	-	48 1/8	-	173
CR 5-22	7 1/2	1	208-230	213TC	-	34 3/4	10 3/8	8 1/8	10 1/4	7 1/2	-	-	50 1/8	50 1/8	-	157	-	-	-	-	-	-
		3	208-230/460	213TC	-	34 3/4	10 3/8	8 1/8	10 1/4	8 1/8	-	-	50 1/8	50 1/8	-	157	-	-	-	-	-	-
CR(E) 5-24	7 1/2	1	208-230	213TC	-	36 7/8	10 3/8	8 1/8	10 1/4	7 1/2	-	-	52 1/4	52 1/4	-	161	-	-	-	-	-	-
		3	208-230/460	213TC	-	36 7/8	10 3/8	8 1/8	10 1/4	8 1/8	-	-	52 1/4	52 1/4	-	161	8 3/4	7 1/2	-	52 3/8	-	180

\* TEFC voltage is 115/230

<sup>1</sup> Weights based on pump with ODP motor (see price list for individual weights)

All dimensions in inches unless otherwise noted.